

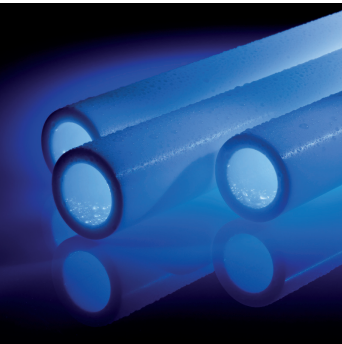
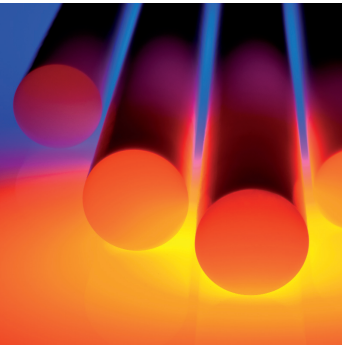
**- I N D I S P E N S A B L E -**

**Solutions from the company  
Beichler + Grünewald for processing PTFE**



Hello, my name is...

...from the company Beichler + Grünewald

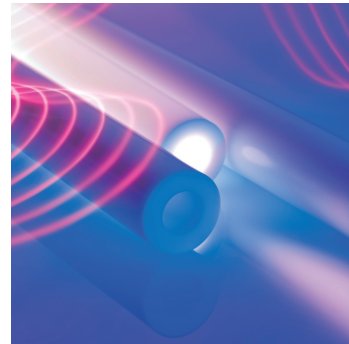
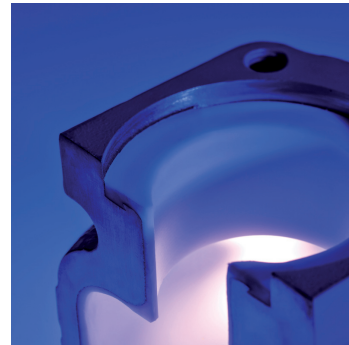


## Our expertise

We specialize in processing the material polytetrafluoroethylene – PTFE for short.

This plastic has very special characteristics, including:

- Extreme temperature resistance from  $-200^{\circ}$  to  $+260^{\circ}$  Celsius
- Chemical resistance against nearly all media
- Absolutely anti-adhesive
- Very good electrical insulation properties
- The lowest coefficient of sliding friction of all solids
- Stable dielectric constants when used in high-frequency areas



## Laser branding

We use the latest laser techniques to label our PTFE products, thus ensuring that they are unmistakable and traceable.

This allows our customers to reliably and conclusively verify the origin and quality of our semi-finished products and extrudates.



**B+G has the expertise to produce and process compounds for customerspecific requirements using mineral or organic fillers.**

**Our in-house design office allows us to develop chemical formulations and design highly accurate tools to manufacture your products.**

**Our experienced teams produce semi-finished products, coatings, extrudates, compression-molded parts and end products, which are tailored to your precise demands, on our highly efficient machines in our well-equipped manufacturing centers.**



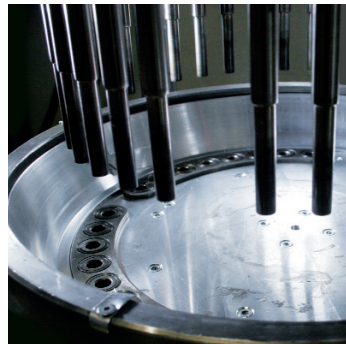
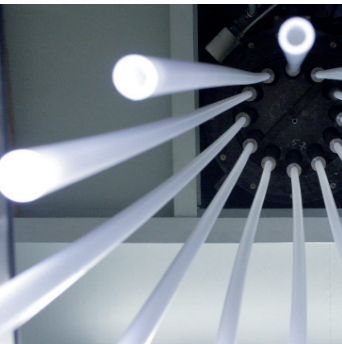
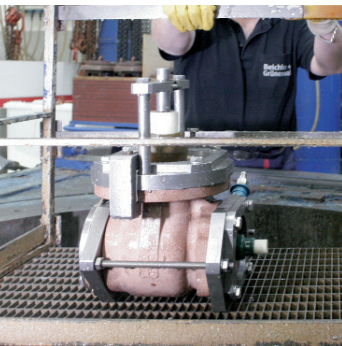
## Our production

Various processes are used, depending on the product requirements – for instance, hydraulic or isostatic pressing or extruding.

We use equipment such as CNC-controlled lathes and milling machines for secondary finishing.

Other manufacturing facilities allow us to enhance surface finish through polishing, barrel finishing and plastic coatings.

The latest machines for control and measurement provide a sustainable quality assurance system.

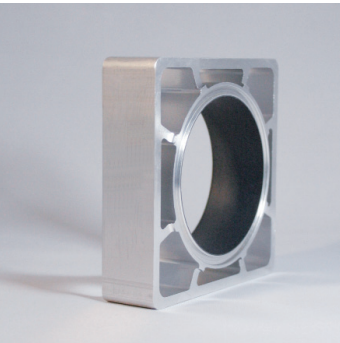
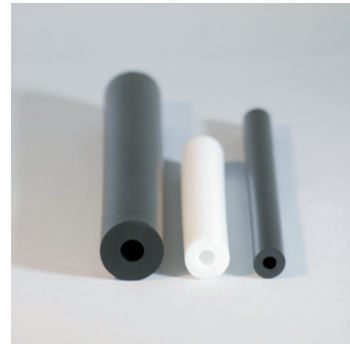




## Our products

Beichler + Grünwald produce many products from PTFE – for example, semi-finished products, extrudates, coatings, compression-molded parts, end products and structural components. PTFE can be used in nearly all industrial areas.

One of its advantages is that it is entirely suitable for food contact applications.




 ZERTIFIKATESYSTEM

DIN EN ISO 9001:2008

Beichler + Grünwald

Beichler + Grünwald

Kunststoff - Technologie

Beichler Straße 1

74389 Löffingen

in den Tätigkeitsbereichen:

Herstellung und Vertrieb von technischen Kunststoffen

ein Qualitätsmanagementsystem eingeführt hat und anwendet.

Ein Nachweis von DIN EN ISO 9001:2008 ist die Einhaltung der VDA 6.1 (3. Auflage)

hat dem Nachweis erbracht, dass dieses Qualitätsmanagementsystem

die Forderungen der folgenden Norm erfüllt:

DIN EN ISO 9001:2008

Qualitätsmanagementsysteme-Anforderungen (2008)

Dieses Zertifikat ist gültig bis: 15.06.2016

Zertifikat-Registrier-Nr.: 02390

Prüfzeichen des: 08.06.2016

Leiter der Zertifizierungsgesellschaft

Dipl. Geschäftsführer

ENVT

ZERTIFIKATESYSTEM

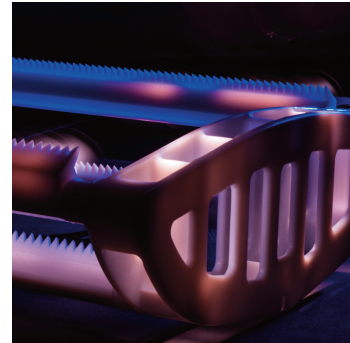
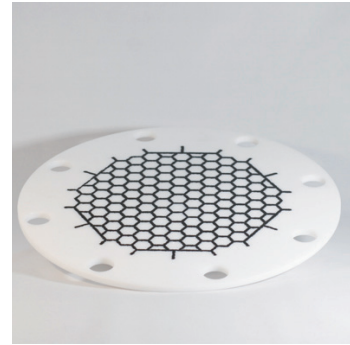
DIN EN ISO 9001:2008 ist Qualität im Handwerk und in der gewerblichen Industrie

Zertifizierungsweltweit. Managementsysteme für Qualität, Flexibilität/Erreichbar.

## Our options

PTFE can also be combined with other materials in order to optimize the desired characteristics.

For example, glass fibers improve the compressive strength, whilst carbon fibers enhance the abrasion resistance and the dry-running characteristics.





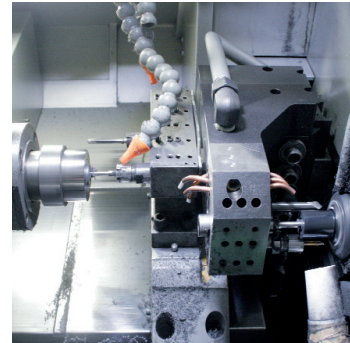
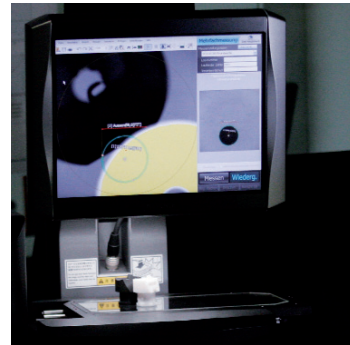
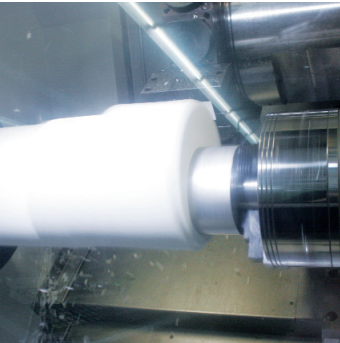
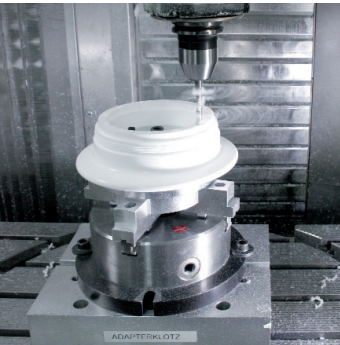
## Our vision

Our aim is to exploit the very many different possibilities offered by the material PTFE in order to bring benefits and therefore to offer costeffective solutions to meet customers' requirements.

Beichler + Grünwald has nearly 40 years' experience in processing PTFE.

We only work with high-quality raw materials from prestigious and reliable suppliers with global operations.

We were certified in accordance with DIN EN ISO 9001 as early as 1996. Our products also meet practically all quality standards and norms.



# Your advantages

**PTFE solutions from B+G:**  
**Extrudates • Semi-finished Products**  
**Coatings • Structural Members**

**„There is Pow(d)er inside“**

We advise you ...  
...develop with you...  
...sproduce results...  
...in accordance with the B+G PTFE purity law.

PTFE Laser Branded

**bg**

**Beichler +  
Grünenwald**  
**Plastics technology**

**Beichler & Grünwald GmbH**

Besigheimer Str. 1 · D-74369 Löchgau · **Tel.: +49 (0) 71 43/96 09 - 0**  
Fax +49 (0) 71 43/96 09 - 100 · [info@b-u-g.de](mailto:info@b-u-g.de) · **Go on [www.b-u-g.de](http://www.b-u-g.de)**